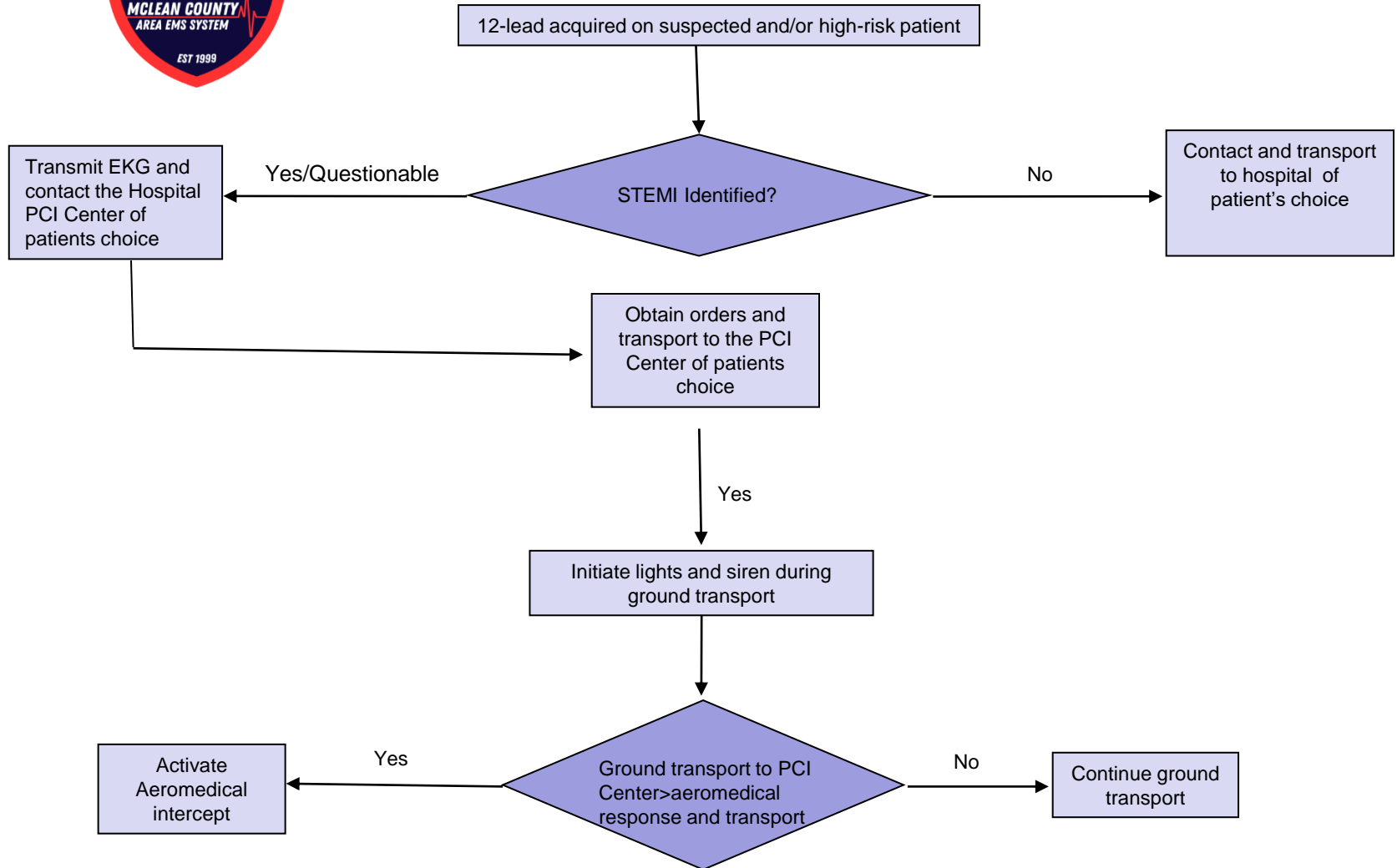




ALS STEMI DECISION TREE



NOTE
Resource Hospital: defined as either Carle BroMenn or OSF St. Joseph
CBMC and OSF SJMC are considered equal distant within the MCAEMS System

Created Date:: 7/1/2019

Created By:: McLean County EMS Manager

Last Reviewed/Revised: May 25, 2022